

Bugged



Pete Positive
Man of Extinction

A Petri's Positive Pest Control Publication
dedicated to keeping our customers
informed about all aspects of pest control.

Residential and Commercial • Indoor & Perimeter Pest Control • Lawn and Ornamental Spraying & Fertilizing • Termite Control Solutions

Petri's Cutest Bugs



The Cavanagh Triplets

Brown Patch Fungus is Common Lawn Problem in Cool Season

One of the most common problems in St. Augustine lawns during the fall and winter months in South Florida is brown patch fungus (*Rhizoctonia* Disease). This fungus becomes active as weather cools following the rainy, humid, hot season. Infection on lawns occurs primarily through leaf blades and sheaths that remain excessively wet for prolonged periods of time, especially over night for 2 or 3 days during cooler weather. Brown patch initially appears as circular-shaped patches with diameters of only 1 to 6 inches. The leaves of infected grasses continue to become brown and blighted and can expand to large circular areas that are several feet wide.

What you can do to help: To control brown patch fungus from emerging avoid over-watering or watering during the evening or night hours. Allowing the lawn, particularly in the infected areas, to dry out is essential. Water only as needed if lawn shows signs of drought stress (general schedule

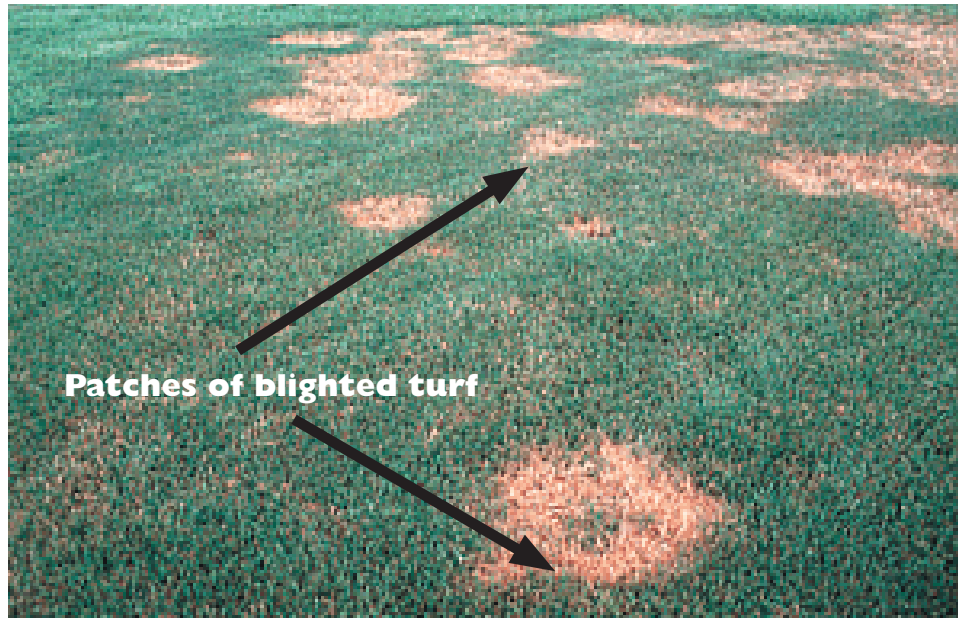
(Continued on page 2)

Brown Patch (Continued from page 1)

for winter is once every 7 to 10 days, 30 minutes a zone in early a.m). Do not over-fertilize your lawn since excessive fertilization with high amounts of nitrogen can contribute to or spread the fungus. Lawns that are cut too low will exhibit more symptoms of the disease so mow the lawn at the recommended height of 2 1/2 to 3 inches, removing no more than 1/3 of the blade each time.

What Petri can do to help:

Petri will apply fungicides to the infected areas to help suppress disease pathogens and allow the damaged area to recover. New green grass will begin to emerge over time. This process will be expedited if the lawn dries out in these areas.



Brown patch normally occurs in Fall/Winter and results in the formation of unsightly patches of blighted turf. The disease may appear as roughly circular patches of blighted turf that range in size from a few inches to several feet in diameter. Turf in patches initially develops a dark purple-green color similar to that associated with drought stress. The damaged turf quickly fades to light tan or brown. Thanks to K-State Research and Extension Plant Pathology Fact Sheet.

Petri can take care of your lawn too!

For a limited time*, Petri's current pest control customers will receive **\$25 off the initial service** when they become annual lawn customers.

Let Petri's Lawn Care Professionals take care of your property. Call (954) 781-4100 now!

***This promotion good from November 10, 2007 - December 31, 2007.**

What's covered with Petri's Total Lawn Protection Service?

Harmful Insects – Chinch Bugs, Sod Webworms, Fire Ants • and if elected **Nuisance Insects** – Fleas & Ticks

Fungus & Disease – Brown Patch, Gray Leaf Spot, Dollar Spot •

Fertilization – Granular & Liquid **Broadleaf Weed Control** •

Recommendations on Proper Watering and Mowing Practices.

If you are interested only in controlling insects and fungus in your lawn, inquire about **Petri's General Lawn Protection**.

Be sure to inquire about Petri's tree and shrub services too.

\$25 Off the Annual Total Lawn Program for New Lawn Care Customers
(Does not apply to current customers, expires 12/31/07)

\$\$\$

25

Your Name _____

Address _____

Phone _____

E-Mail _____



Petri would like to wish all of our customers and neighbors a very Pest Free



Happy and Healthy Holiday Season